

FlexControl Quick Start Guide



Introduction:

Thank you for choosing the FlexRadio Systems® FlexControl™ tuning and control knob. The FlexControl is a highly versatile, compact control device, designed to be used in conjunction with SmartSDR™ for Windows software running on a personal computer under Windows XP, Vista, Windows 7 or Windows 8.x. The FlexControl is integrated into SmartSDR to create the perfect Software Defined Radio Environment and is designed to meet your demanding Amateur Radio needs.

Setting up the FlexControl is no more difficult than connecting a mouse or other USB control device to your computer, as this Quick Start Guide will demonstrate.

The Quick Start Guide is designed to get you on the air with minimum effort. To do this, we assume a FlexRadio Systems radio installation with SmartSDR for Windows is already operational.

To get your FlexControl on the air you will need:

- The FlexControl with its attached USB cable.
- A functioning FlexRadio installation.
- SmartSDR for Windows installed and functioning on your personal computer.

If you run into any trouble during the set-up process, please:

- Recheck your steps.
- Submit a HelpDesk support ticket at <https://helpdesk.flexradio.com/>.

Follow these 2 steps to interface your FlexControl with SmartSDR.

Step 1: Install SmartSDR for Windows

Verify that it is configured, and operating with your radio.

Step 2: Plug FlexControl into a USB port

Allow the computer to find and install the driver.

Step 3: FlexControl with SmartSDR

How to use the FlexControl with SmartSDR for Windows.

Step 1: Install SmartSDR for Windows

Support for the FlexControl is available in all versions of SmartSDR for Windows.

The necessary device driver and associated information for the FlexControl is included in this release, and will automatically be installed in your PC, when a new version of SmartSDR for Windows is installed.

Step 2: Plug FlexControl into a USB port

In Step 2, with the computer turned on, and SmartSDR for Windows installed *but not running*, simply plug the FlexControl into a USB port.

Note: All three lights will be on when the FlexControl is initially plugged into the computer, and some or all of them will go out when the device has been installed and connected.

Windows Vista, Windows 7 or Windows 8.x Installation:

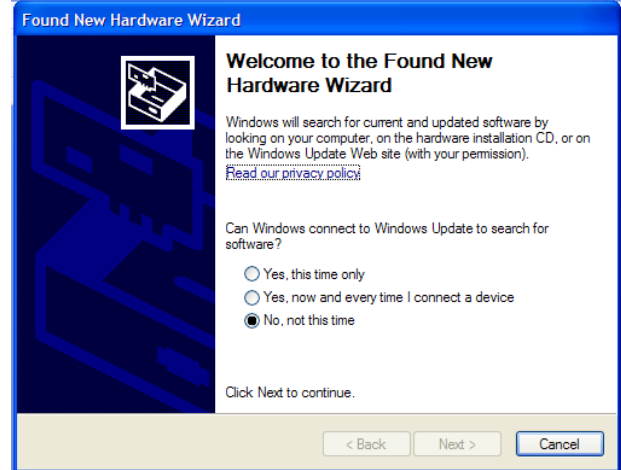
On Windows Vista, Windows 7 or Windows 8, the computer should display a message saying "Installing Device Driver." A

few moments later a message will appear that says "FlexControl Driver is successfully installed" and "The device is ready for use."

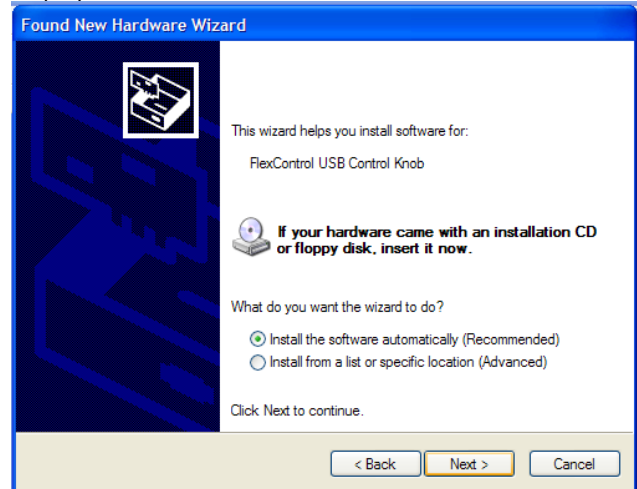
Note: Anytime in the future that a different USB port is used for the first time with the FlexControl, the Device Driver Installation will repeat.

Windows XP:

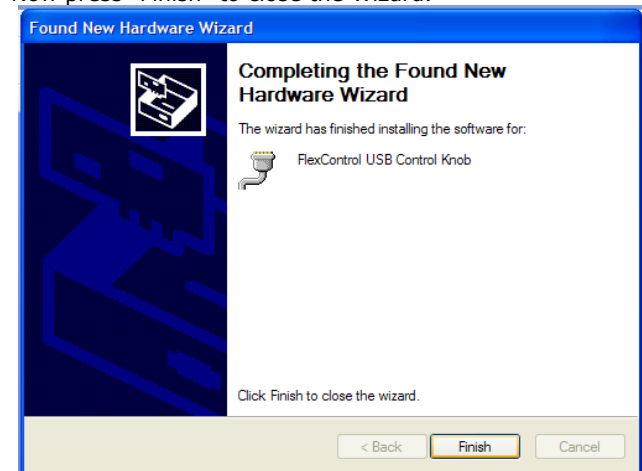
After plugging in the FlexControl for the first time, (or anytime in the future that a new USB port is used) the "Welcome to the Found New Hardware Wizard" will appear. Check the "No, not this time" option, then press "Next."



A new Wizard screen will appear, explaining that the "Wizard helps you install software for: FlexControl USB Control Knob".



Check "Install the software automatically." Then press "Next." This will result in a message that the "Wizard has finished installing the software for FlexControl USB Control Knob." Now press "Finish" to close the Wizard.



Step 3: FlexControl with SmartSDR

The FlexControl is automatically assigned to the active Slice receiver and will tune the slice with the VFO control knob. The active Slice receiver is indicated by the yellow carrier frequency line. To make a non-active Slice receiver the Active Slice receiver, just left mouse click on the Slice receiver's pass band filter, which are the shaded areas adjacent to the red carrier frequency line. The carrier frequency line will turn yellow indicating it is now the active Slice receiver.

Additional FlexControl features will be enabled in subsequent versions of SmartSDR for Windows.



This device was tested to comply with FCC and CE standards and is approved for home or office use.

Note:

This equipment has been tested and found to comply with the limits for a Class B digital device pursuant to part 15 of the FCC Rules. These limits are designed to provide reasonable protection against harmful Interference in a residential installation. This equipment generates uses, and can radiate radio frequency energy and, if not installed and used in accordance with the Instruction manual, may cause harmful interference to radio communications. However, there is no guarantee that Interference will not occur in a particular installation.

! – WARNING! i – Information Δ – Caution

! – This unit is NOT A TOY. It must not be handled by children nor placed/operated within reach of children.

! – Do not leave packing material for this unit unattended. It may be harmful to children if misused.

! – This unit contains small parts that could be a choking hazard to small children. Do not leave accessories unattended.

! – Do not operate this unit in potentially explosive environments.

! – Never attempt to insert wires or any tools into the interior of this unit during operation. This may cause fire or electric shock.

! – This unit must only be operated with the electrical power supplied by a computer USB port, as described in this Quick Start Guide. NEVER CONNECT THE USB CONNECTOR to anything other than Computer with an approved USB connector.

Δ - This unit must only be opened and/or serviced by a qualified technician.

Δ - Do not operate this unit in areas of extreme humidity.

Δ - Avoid operating this device in areas of extreme heat, excessive vibration, or mechanical force.

Δ - If any defect, abnormal result, or other observations occur that are not covered by this Quick Start Guide or the Owner's Manual; immediately cease operation and contact the manufacturer or local distributor for operational advice or repair of the unit.

i - Please study the complete Quick Start Guide and Owner's Manual. These documents contain important information regarding the safe operation of this unit. If you have any questions, please contact the manufacturer or local distributor for further information.

www.flexradio.com +1 512-535-4713

©2012-2014. All rights reserved. FlexRadio Systems is a registered trademark. FlexControl and SmartSDR are trademarks of FlexRadio Systems. Specifications are subject to change without notice. Personal computer and monitor required but not included.