



SmartSDR™ for Windows v3.2.39 Release Notes

June 2, 2021

SmartSDR v3.2.39 is a maintenance release intended for use with the FLEX-6400™, FLEX-6400M™, FLEX-6600™, FLEX-6600M™, FLEX-6300™, FLEX-6500™, and FLEX-6700™ software defined radios which contain critical software defect fixes identified in previous versions of SmartSDR.

This document covers SmartSDR for Windows, SmartSDR for the "M" Model FLEX-6000s, and Maestro. Please consult the [SmartSDR Software Users Guide V3](#) for details on using the new and updated features of SmartSDR for Windows for the optimal operating experience.

Please see the "Important Release Details" section before upgrading. Several best practice recommendations will facilitate a smooth transition to the new version of SmartSDR.

What's New in SmartSDR v3.2.39?

SmartSDR v3.2.39 addresses the SmartLink login issue for the Maestro and SmartSDR for M Model radios. This version supersedes SmartSDR v3.2.37 for Windows. All users are recommended to upgrade to SmartSDR v3.2.39 at their earliest convenience.

WARNING FOR ALL USERS: SmartSDR v3.2.39 and all subsequent SmartSDR v3.x versions require version 4.6.2 or greater of the .NET Framework. The .NET Framework is an integral component of the Windows operating system that supports running applications on Windows. For Win10 users, the .NET update is already installed and should not require any actions to update the .NET Framework. For other versions of Windows, you may be prompted to upgrade the .NET Framework before you can use SmartSDR v3.2.39.

Please follow any prompts provided by your version of Windows for the installation of .NET v4.6.2. Also, a reboot of the PC may be required after upgrading the .NET Framework on your PC. Note that you may have to install Windows security updates as a prerequisite before installing .NET v4.6.2. Also, .NET 4.6.2 may not install on unsupported versions of Windows.

The .NET Framework is also upgraded for the Maestro "A" and "B" versions as well as the front panel for all M model FLEX-6000s.

IMPORTANT INFORMATION FOR ALL Maestro UPDATES: Your Maestro must be connected to DC power (not using a battery pack) using the AC power brick or other reliable 13.8 VDC power source and connected to the Internet for the entire update process so that the .NET update can be properly downloaded and installed. We *STRONGLY* recommend that you perform this update connected to a hard-wired Ethernet connection rather than over Wi-Fi to ensure the greatest chance of success and a faster update.

Don't panic if you lose connection to the Internet; we designed the .NET Updater process to cover that fault case, and our testing has shown that network interruptions do not brick your Maestro. However, if a fault occurs, it may require you to re-perform some portion of the update before completion. Please note that the Maestro must be powered using the DC power connector for the Ethernet interface function.

The OS and .NET update portion of this process need only be successfully performed on your Maestro once. Once the OS is updated, it stays updated. Previous versions of the Maestro software should run, but they will still be unable to log into SmartLink.

There are some differences in how the .NET Framework and OS updates are installed based on the device being upgraded. Primarily, the amount of time needed to update and whether or not the .NET Updater is run. A brief description of the upgrade process for each Maestro and M Model radios is described below:

M Model Front Panels: The M Model front panel display already includes the appropriate version of the .NET framework, so no system updates are required. The new .NET Updater will detect the correct version of .NET, then skip any system updates. The upgrade of an M Model FLEX-6000 should not take any more time to install than any previous version of SmartSDR.

Maestro A (power button located on the top): Maestro A requires an upgrade of the .NET framework before SmartSDR is installed. When upgrading SmartSDR on a Maestro "A", the .NET Updater will run, providing information about the .NET upgrade process as it proceeds.

Depending on several factors, the .NET Updater may or may not run in unattended mode. In unattended mode, the Maestro will reboot and automatically continue to the next stage of the .NET upgrade process. In attended mode, the user will have to connect to a FLEX-6000 and select SmartSDR v3.2.39 to continue the upgrade process.

Release testing indicates it will take approximately 10-20 minutes.

Once the update has been completed, please manually power down and restart the Maestro before connecting to the FLEX-6000 to ensure the embedded Windows OS initializes properly.

Maestro B (power button located on the side): The operating system in the Maestro "B" requires multiple prerequisite operating system updates before the .NET update can be installed. There are three (3) passes of updates, and each pass contains four (4) steps. A reboot of the Maestro is required after each pass.

Depending on several factors, the .NET Updater may or may not run in unattended mode. In unattended mode, the Maestro will reboot and automatically continue to the next stage of the .NET upgrade process. In attended mode, the user will have to connect to a FLEX-6000 and select SmartSDR v3.2.39 to continue the upgrade process.

Release testing for the Maestro "B" indicates it can take upwards of three (3) to (4) hours to complete the upgrade process. The Maestro "B" upgrade is highly dependent on the Internet connection speed and reliability. Using a wired Ethernet connection is highly recommended, but not required.

Upgrading a Maestro "B" is more time-intensive than any other SmartSDR upgrade, so please be very patient and allow the process to proceed without any interruption.

Once the update has been completed, please manually power down and restart the Maestro before connecting to the FLEX-6000 to ensure the embedded Windows OS initializes properly.

To watch the Maestro B SmartSDR OS and .NET update process with the wait times removed, please view the following video: [FlexRadio v3.2.39 and v2.7.6 \(or higher\) Maestro Version B Upgrade](#)

WARNING FOR REMOTE USERS: Please see the WARNINGS and CAUTIONS below, specifically the one regarding the need to factory reset the radio after upgrading to SmartSDR v3.2.37 from v3.2.31. A factory reset cannot be performed remotely, so it is recommended that someone be on site with the radio when upgrading.

If you are updating a remote radio using a VPN, having the ability to turn off and on the DC power supply and being able to reboot the radio using the REM ON connector should be a prerequisite before upgrading the FLEX-6000.

CAUTION FOR MAESTRO USERS: For SmartSDR v3.2.39 when upgrading a Maestro, as a prerequisite, it must be able to access a FLEX-6000 over the network before proceeding. And the connection must be maintained during the .NET Updater phases of the SmartSDR upgrade process. This requirement may not be possible for remote uses. If you are not able to connect to a FLEX-6000 over the LAN to perform the SmartSDR v3.2.39 upgrade, please contact the HelpDesk for possible options.

AVAILABILITY OF OLDER VERSIONS OF SmartSDR: Starting with SmartSDR v3.2.37 and v2.7.5, SmartLink is no longer supported with previous versions of SmartSDR. All previous versions of SmartSDR for Windows, except for SmartSDR v2.4.10, including SmartSDR for the Maestro and the M models will no longer be available after SmartSDR v3.2.39 has been released. This will give you time to prepare for upgrading to the latest version of SmartSDR. It is highly recommended that you upgrade to the latest version of SmartSDR at your earliest convenience. This has ramifications for remote users since radio firmware updates are not supported over a SmartLink connection.

New Features and Bug Fixes in SmartSDR v3.2.39

Fixed SmartLink Login Issue for Maestro and M Model Radios: Due to a security update to Auth0, the software used to manage secure access for SmartLink, the .NET Framework used with previous versions of SmartSDR does not properly support the TLS v1.3 security update. This issue has been resolved for SmartSDR for the Maestro and the M Model FLEX-6000 software defined radios. Starting with SmartSDR v3.2.37, all versions of SmartSDR will require version 4.6.2 of the .NET Framework (#J8420)

OS Updates for Maestro and M Model Radios: Add the .NET Updater for OS and .NET updates for the Maestro and M Model FLEX-6000 radios (#J8424)

Important Release Details

Backup your profiles before upgrading: Moving back and forth between different versions of SmartSDR may result in data loss unless you have a backup (export) of your Profiles. It is recommended to export all profiles *before upgrading* to v3.2.39, and export profiles again before reverting to previous versions.

NOTE: There is one exception. If the FLEX-6000 is running SmartSDR v3.2.31 do not export the profiles before upgrading. As noted above the SmartSDR v3.2.31 database may contain corrupted data and is not suitable for exporting profiles.

Exporting profile data is covered in detail below in the *Best Practices for Installing / Uninstalling SmartSDR v3* section. Maintaining a good set of profile exports as backups is *always* a best practice.

Upgrading FLEX-6400M and FLEX-6600M Front Panel: If you are upgrading a FLEX-6400M or a FLEX-6600M using SmartSDR for Windows, the upgrade will not be applied to the software in the Front Panel of the "M" Model.

The radio must first be connected to your network and can access the Internet to download the necessary software to update the front panel.

After the radio firmware updates from your PC, shut down SmartSDR for Windows and connect to your radio using the "M" Model Front Panel. The Version Select screen should display SmartSDR v3.2.39 showing a download icon. Selecting that version will start the final portion of the upgrade process.

For a detailed description of the SmartSDR for Windows software upgrade process, please refer to the [SmartSDR Software Users Guide V3](#)

Always Perform a Factory Reset of your Radio when Downgrading the Radio Firmware:

The database in the FLEX-6000 is NOT backward compatible. This means if you downgrade the firmware in your radio, you *must perform a Factory Reset* to ensure the internal database is consistent with the version of SmartSDR firmware that is running on the radio.

The procedure for performing a Factory Rest is described in the **Best Practices for Installing a New Version of SmartSDR for Windows section** below.

In addition to performing a Factory Reset on the radio, you mustn't import a database using a profile export that is greater than the version you are using. In later versions of SmartSDR, the profile export file name contains the version of SmartSDR that was running when the export was saved to your PC.

SmartSDR v3 requires a software license installed on the radio before it can be used with a FLEX-6000: If your radio is licensed for a version of SmartSDR less than v3, a SmartSDR license upgrade is required. Once the FLEX-6000 has been licensed for SmartSDR v3, all subsequent point releases (v3.x) are available at no additional expense. Please see the section "Purchasing a SmartSDR Software License for your FLEX-6000" for instructions on how to purchase a license.

Best Practices for Installing / Uninstalling SmartSDR

Best Practices for Installing a New Version of SmartSDR for Windows

Always backup your Global, TX (transmit), and Microphone Profiles. Please refer to the *SmartSDR for Windows Software User's Guide* for detailed instructions related to exporting your profiles to a file on your PC.

When you upgrade to a newer version of SmartSDR for Windows, a database conversion program runs automatically to convert older profile schemas to an updated one.

When downgrading versions, SmartSDR is unable to restore the updated profile schema version, which may cause profile corruption. To recover your previously created profiles after a software version downgrade, import the profile data created using the downgraded version of SmartSDR for Windows.

Ensure your Windows operating system is up to date before installing SmartSDR for Windows. The proper operation of SmartSDR for Windows and its associated drivers relies on having an up-to-date and supported Windows operating system including the root security certificates. It is strongly recommended that you run Windows Update and install all mandatory and optional updates before installing SmartSDR for Windows.

Managing SmartSDR installed on other devices. If using Maestro or other PCs running SmartSDR for Windows, update all devices at the same time to ensure a consistent operating experience and to avoid radio firmware upgrade/downgrade delays.

Power cycle the FLEX-6000 radios before installing a new version of SmartSDR for Windows. To ensure a seamless upgrade of the FLEX-6000, it is recommended that you power cycle your radio *before* installing the SmartSDR for Windows software on your PC and updating the radio firmware.

"Cold Boot" your FLEX-6000 after upgrading the radio firmware. Using the power button, shut down the radio, then disconnect it from DC power for 30 seconds. This procedure "*cold boots*" the radio and helps ensure proper operation. Once DC power is restored to the radio, wait an additional 2 minutes to ensure that all internal processors have booted up completely before pressing the power button to load the SmartSDR firmware and boot your radio.

What to do if the firmware updates do not finish after 5 minutes? On rare occasions, an update may not signal the completion of a firmware update. If five (5) minutes have elapsed without the radio restarting and completing the upgrade, power off the radio by pressing the power button. The radio should restart, and the firmware update should complete normally.

Note: It would be rare that a single press on the power button does not shut down the radio. However, if this occurs, remove the DC power cable from the radio to force a hard reset. Wait about 1 minute, restore DC power, wait 2 minutes and depress the power button. The radio will restart and the firmware update should complete successfully.

How to Factory Reset a FLEX-6000

There may be situations where a factory reset of the FLEX-6000 is needed to ensure that the radio is working properly. If instructed to Factory Reset the FLEX-6000, use the procedure below.

Perform a Comprehensive Cold Boot and Factory Reset of your radio

Please pay attention to the "wait times" that are part of the steps listed below. These are important to ensure the radio resets properly.

- Power off the radio by pressing and releasing the power button. Allow it to completely power down before continuing by waiting for the power LED to turn off (or amber if a GPSDO is installed). If pressing and releasing the power button does not shut down the radio, **press and hold** the power button until the radio shuts down.
- Once the radio is powered off, **wait for 2 minutes** to allow for all processors to properly shut down.
- Remove the power cable from the radio for **at least 30 seconds** and then reconnect it. It is important to remove the power cable from the radio and not just turn off the power supply.
- After reconnecting the DC power cable, **wait for 2 minutes** to allow for the internal PSoC processor to boot up completely before continuing.

For the FLEX-6700 and FLEX-6500:

- Press and hold the OK button while pressing and releasing the Power button.
- Release the OK button once the power LED turns white and allow the radio to continue booting normally.

For the FLEX-6300, FLEX-6400(M), and FLEX-6600(M):

- Press and hold the Power button for approximately 5 seconds until the power button or power LED turns white. Release the power button and allow the radio to continue booting normally.

Best Practices for installing a new version of SmartSDR for an "M" Model FLEX-6000 or Maestro

The following best practices are applicable only when installing a new version of SmartSDR on a Maestro.

Both the Maestro and an M Model FLEX-6000 must have network access that allows connectivity to the Internet to download the new SmartSDR software.

Ensure your Maestro has a reliable power source. Make certain the supplied AC adapter is used to power the unit. This prevents the Maestro from losing power during an update.

Ensure your Maestro has a reliable network connection. The Maestro and radio firmware are upgraded entirely through the network connection. When upgrading a Maestro, a wired Ethernet connection is recommended; wired Ethernet connections are faster and more reliable than Wi-Fi.

Uninstalling Previous Versions of SmartSDR for Windows – Is It Necessary?

In general, the answer is no, but there are considerations when more than one version of SmartSDR is maintained on your system:

Currently, every version of SmartSDR for Windows is installed in a "side by side" manner allowing the use of previous versions and supporting easy version switching of both software and radio firmware as long as there are no software dependencies that prevent backward compatibility. This method of installing places unique versions of software on your PC rather than removing or upgrading previous versions.

Release Specific Caveats:

SmartSDR v3.2.39 will install an updated FlexVSP driver that is not backward compatible with previous versions of SmartSDR CAT and will result in an unhandled exception error.

After installing this release (v3.2.39) we strongly recommend you do not revert to any version before SmartSDR v3.1.12 to ensure the data integrity of the SD card is maintained.

SmartSDR for Windows Shared Components:

The SmartSDR ecosystem employs shared components used by multiple versions of the software. When previous versions of SmartSDR for Windows are uninstalled it may result in the removal of one or more of these shared components, which may make newer versions inoperable.

Therefore, if you desire to uninstall an older version of SmartSDR, we highly recommend you uninstall older versions before installing a new version of SmartSDR for Windows.

Removing the DAX and FlexVSP drivers are not recommended unless explicitly instructed to do so in the Release Notes or by FlexRadio Support.

Known Issues

- **If you revert from any version of SmartSDR v3 to a previous version you should perform a factory reset of your radio.** When reverting to a previous version of SmartSDR there can be database incompatibilities that may result in operational anomalies. It is recommended that a factory reset be performed after downgrading to ensure the database schema is 100% compatible with the version being used.

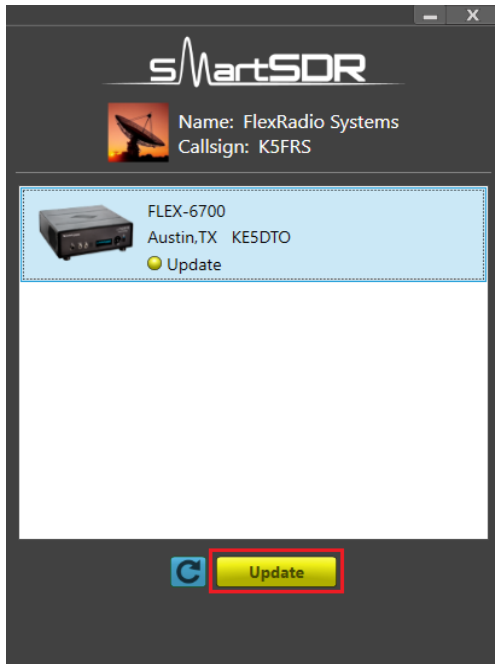
Once the radio has been factory reset, **DO NOT** import any profiles created using a version of SmartSDR greater than the one installed on the FLEX-6000. We recommend deleting any profiles exported using SmartSDR v3.2.31 to ensure that they are not utilized as profile backups. Importing profiles created with earlier versions of SmartSDR than the installed version in the FLEX-6000 is acceptable.

FlexVSP NOTE: A new FlexVSP driver for SmartSDR CAT is installed with SmartSDR v3.2.34 and greater if an upgrade is required. The SmartSDR installation software will automatically remove the previous FlexVSP driver and install the new one. The new FlexVSP driver is not backward compatible with previous versions of SmartSDR CAT. An unhandled exception error will occur when using previous versions of SmartSDR with the new FlexVSP driver.

- During alpha testing, after the initial installation of the updated DAX drivers provided in SmartSDR v3.1.6, a handful of users reported a Windows "stop error" (colloquially known as the Blue Screen of Death or BSoD). In most cases, the error occurred once and after a subsequent PC reboot, the error did not occur again or impact proper DAX operations. We are working to identify the cause and resolve the behavior.
- After installing the updated DAX drivers, if you receive a DAX error where all the DAX channels are red, the most common reason for this is due to the lack of a default Windows audio playback device (speakers). To identify this error condition, look at the speaker icon in the Windows Task Bar. If it has a red "X" on it, this indicates a missing default audio playback device. To resolve this issue, simply connecting a pair of PC speakers or a headset to the PC will cause Windows to find a suitable default audio playback device and upon restarting DAX, the error condition should be resolved.
- FLEX-6700 only: There is a known issue (#G280, #G1527) where changing bands on one panadapter may change the frequency of another panadapter when going to or from 2m (or an XVTR using 2m as an IF). One way to work around this issue is to use the Band buttons instead of setting the Antenna on the Panadapter or Slice, and then entering the desired frequency into the Slice to tune into (or out of) the 2m band (or an XVTR using 2m as an IF).
- (#G6938) Operation with Pactor modems will not work properly in v3.2.39. Pactor operation is functional in v2.4.10.

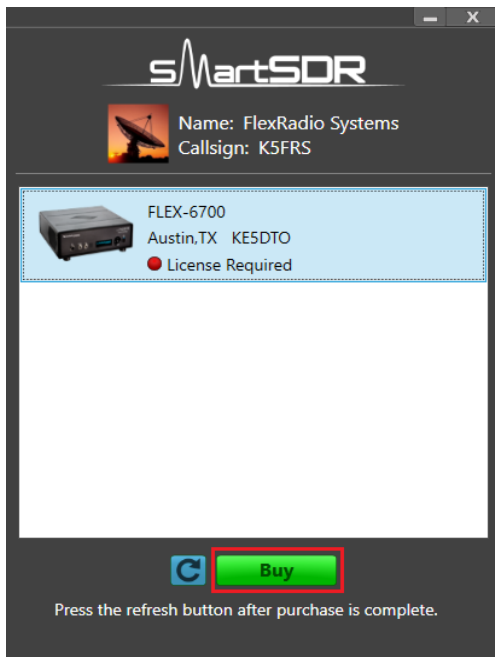
Purchasing a SmartSDR Software License for your FLEX-6000 using SmartSDR for Windows

Obtaining a SmartSDR software license using SmartSDR for Windows is easy and convenient. Download the latest software installer for SmartSDR and run it to install the software on your PC. Using the new software, update the radio with the new firmware. Start SmartSDR then select the radio in the radio chooser window and press the yellow Update button.



Once the update completes, if the radio you are upgrading requires a license, the radio status will show "License Required" and you will be presented with a Buy button that will launch a web browser, which will take you through the steps to purchase the license.

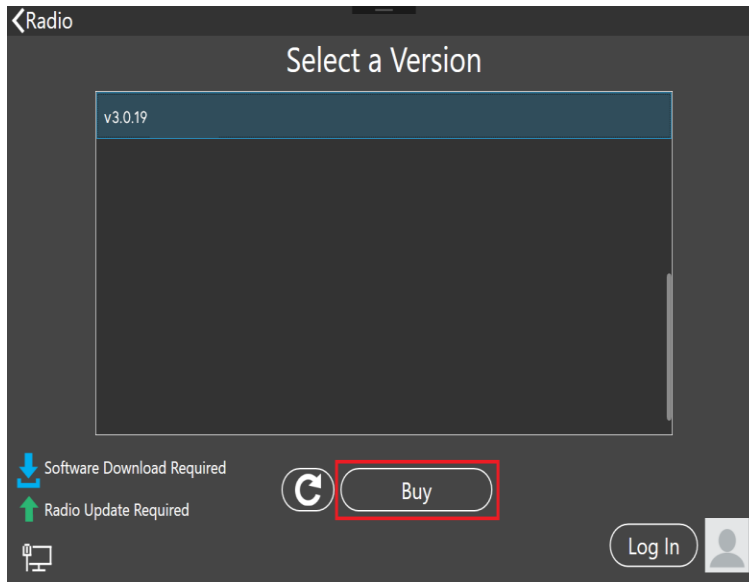
Note: New radios purchased include a SmartSDR license for the current major version and will not see the "License Required" indicator.



Once you have purchased a SmartSDR license for your radio, click the blue circular refresh button in the radio chooser window to update the license information for the radio. It may take up to a minute after the purchase completes before the radio acquires its license and cycling the power on the radio may be required.

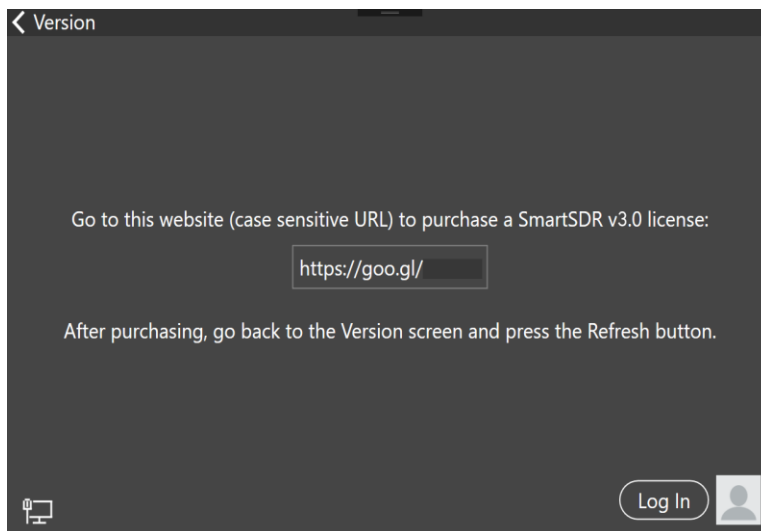
Note: The radio (not just the computer) will need internet access to obtain the newly acquired license. Please ensure that the radio is plugged into a network that gives internet access.

Purchasing a SmartSDR Software License for your FLEX-6000 using an “M” Model FLEX-6000 or a Maestro

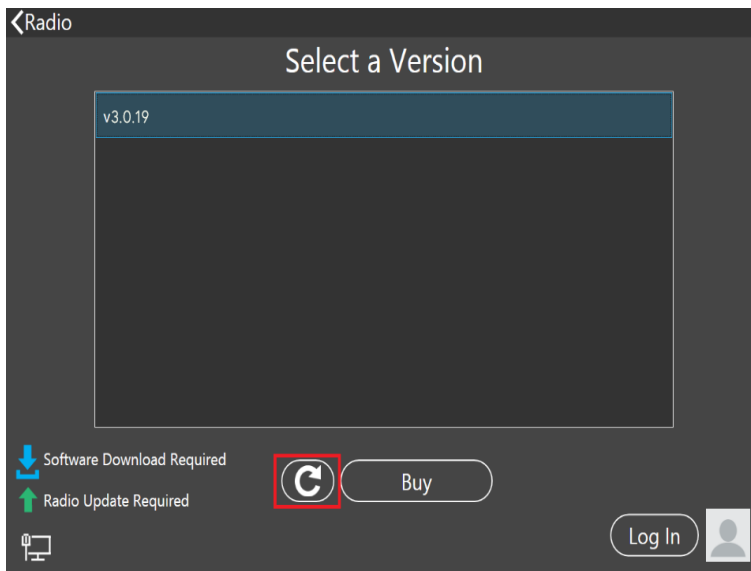


Obtaining a SmartSDR software license using an M model FLEX-6000 or a Maestro is easy and convenient. After downloading and installing a 3.x software version, At the Select a Version screen choose the version 3 software just installed. If you need to purchase a license to run the software, the Buy button will appear as shown below.

Tapping the Buy button will generate and show a shortened URL that must be plugged into a browser manually. Note that the URL is case-sensitive and unique for each radio.



When the license purchase is complete, tap the Version link at the top left corner of the screen to go back to the Select a Version screen. At the Select, a Version screen, tap the refresh button (circular icon) to update the license information for the radio. It may take up to a minute after the purchase completes before Maestro finds the new license.



When the license is updated, the refresh button will disappear and the Buy button will change to a Run button. Tap the Run button to connect SmartSDR v3 for an M Model FLEX-6000 or Maestro to your FLEX-6000.

SmartSDR Documentation Available from www.flexradio.com

The following documentation and how-to guides for SmartSDR v3.2.39 are available as a convenient download from the FlexRadio website.

SmartSDR for Windows Software User's Guide

<https://www.flexradio.com/documentation/smartsdr-software-user-guide-pdf/>

FLEX-6400M and FLEX-6600M User's Guide

<https://www.flexradio.com/documentation/flex-6400m-and-flex-6600m-user-guide-pdf/>

SmartSDR CAT User Guide

<https://www.flexradio.com/documentation/smartsdr-cat-user-guide-pdf/>

FLEX-6000 Signature Series Hardware Reference Manual

<https://www.flexradio.com/documentation/flex-6000-hardware-reference-manual-pdf/>

FLEX-6400 and FLEX-6600 Hardware Reference Manual

<https://www.flexradio.com/documentation/flex-6400-and-flex-6600-hardware-reference-manual-pdf/>

FLEX-6000 Signature Series Quick Start Guide

<https://www.flexradio.com/documentation/flex-6000-family-qsg-single-page-pdf/>

SmartLink for SmartSDR Quick Start Guide

<https://www.flexradio.com/documentation/smartlink-quick-start-guide-for-smartsdr-pdf/>

FreeDV Waveform How-to Guide

<https://www.flexradio.com/documentation/freedv-waveform-how-to-guide-pdf/>

USB Cable Interface Guide

<https://www.flexradio.com/documentation/usb-cable-interface-guide-pdf/>

SmartSDR v3 with multiFLEX Installation Video

<https://www.youtube.com/watch?v=zO90kVkiYM8>

SmartSDR V3 Changelog

https://www.flexradio.com/software/smartsdr_v3_changelog/

Obtaining Technical Support

If you encounter any issues installing or operating SmartSDR for Windows with your FlexRadio Systems' Signature Series software defined radio, please use our online [Community](#) to search for information about SmartSDR and the FLEX-6000. If you need assistance using the Community, please refer to the [Community Message Board](#) for additional information.

If you are unable to find an existing answer to your issue via the Community, please contact FlexRadio Systems Technical Support by opening a [HelpDesk support ticket](#) online.

For details on how to submit a HelpDesk support ticket, please refer to the HelpDesk article [How to Submit a Request for Technical Support](#).

Hours of Operation: Our Technical Support engineers are available Monday-Friday from 7:00 AM-4:00 PM Central Time. If you open a HelpDesk ticket after business hours, on a holiday, or weekend, we will respond to your request for assistance during regular business hours in the order your HelpDesk ticket was received.

Copyrights and Trademarks

© 2005-2021 FlexRadio Systems. All rights reserved.

FlexRadio Systems is a registered trademark of Bronze Bear Communications, Inc. DBA FlexRadio.

FLEX-6300, FLEX-6400, FLEX-6400M, FLEX-6600, FLEX-6600M, FLEX-6500, FLEX-6700, FLEX-6700R, Maestro, FlexControl, Power Genius XL, PGXL, SmartSDR, SmartSDR for Windows, SmartSDR for iOS, SmartSDR for MacOS, SmartSDR CAT, SmartLink, DAX, TNF, WNB, multiFLEX, SmartControl, the SmartSDR "spectrum" (logo) and the FlexRadio Systems "wave" (logo) are trademarks of FlexRadio.

FlexRadio
4616 W. Howard Lane
Suite 1-150
Austin, TX USA 78728
+1 (512) 535-4713
www.flexradio.com