

Package Includes:

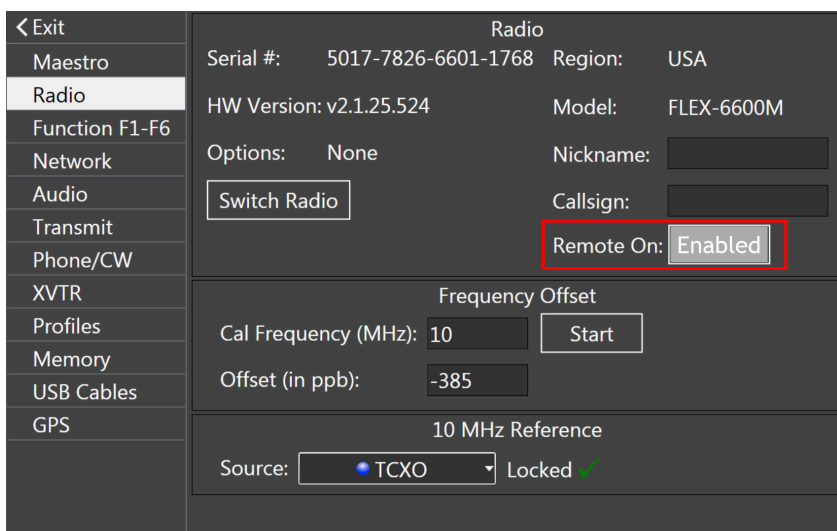
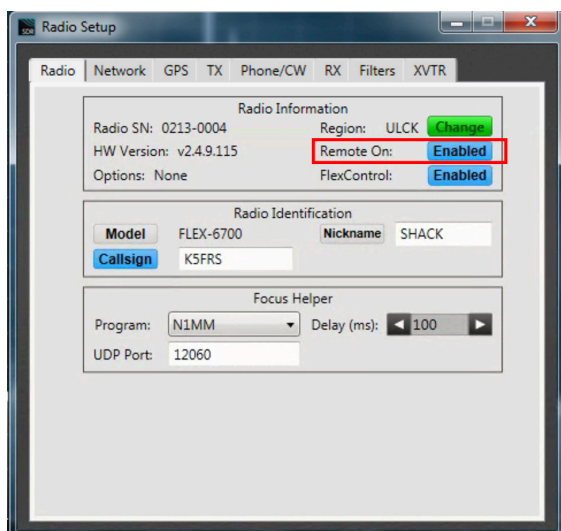
- 1 Kasa Smart Wi-Fi Plug Lite
- 1 Digital Logger AC powered relay
- 1 RCA Cable

Instructions:

- 1 Download Kasa application from iOS or Android App Store.

**Download on the
App Store****ANDROID APP ON
Google play**

- 2 Plug in Kasa Smart Plug to a 120 Vac outlet
- 3 Follow Kasa setup instructions on iOS or Android application.
 - Name the plug "FlexRadio Remote On" or another name easily recognizable.
- 4 Set Digital Logger switch to the "Reset" state.
- 5 Plug the RCA into "REM ON" input on the back of the radio.
- 6 Enable remote on in the settings menu of the radio.
 - Settings/Radio Setup - Remote On: Change to "Enabled".



- 7 Now when the Kasa switch is triggered on/off it will boot/shutdown the radio.